



2013 SCHOOL REPORT CARD

Office of Educational Quality and Accountability

655 Research Parkway, Suite 301, Oklahoma City, OK, 73104 (405) 225-9470 Fax: (405) 225-9474 Web: <http://www.SchoolReportCard.org>

COWETA INTERMEDIATE HIGH SCHOOL (9-9)

COWETA PUBLIC SCHOOLS

POST OFFICE BOX 550, COWETA, OK 74429

Telephone: (918) 486-6103

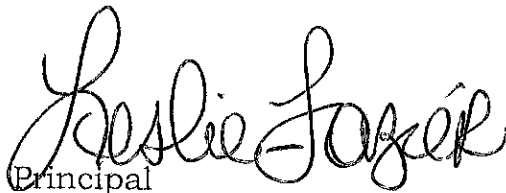
73-1017-710 1629

Message from the Principal:

Based on numerous indicators that measure the quality of education, Coweta Intermediate High School continues to be one of the best schools in the state of Oklahoma. The Education Oversight Board/Office of Accountability has challenged schools to score at least 70% in each subject area of the Core Curriculum Tests. Coweta Intermediate students have far exceeded this goal in both Algebra I and Geometry End-of-Instruction tests.

There are a number of areas we will be targeting in the upcoming years for improvement. We have identified a number of goals that will assist us in preparing our students for success in high school. One of the first and easiest goals will be to improve attendance. It is a simple fact that your child cannot learn if they are not in class. Students will miss classes throughout the year for a wide range of activities and events, but please make sure they are here as many days as possible. Secondly, please make sure that your family puts a high priority on learning in your homes by setting times to study, asking about grades, and attending parent-teacher conferences. Lastly, please contact us if you have any questions or concerns. We have a student information system in place which will allow you to view your student's grades, attendance and homework. Please take advantage of the parent portal and our website.

While we are very proud of this report card, we realize we must continue to improve. We take great pride in educating your children and we constantly strive to do better. We do need your support and help and together we can raise successful citizens and lifelong learners.


Principal



2013 SCHOOL REPORT CARD

Office of Educational Quality and Accountability

655 Research Parkway, Suite 301, Oklahoma City, OK, 73104 (405) 225-9470 Fax: (405) 225-9474 Web: <http://www.SchoolReportCard.org>

COWETA INTERMEDIATE HIGH SCHOOL (9-9)

COWETA PUBLIC SCHOOLS

POST OFFICE BOX 550, COWETA, OK 74429

Telephone: (918) 486-6103

73-1017-710 500

Community Characteristics

Socioeconomic Data

	School	District	State Average
Ethnic Makeup Based upon Fall Enrollment:			
Caucasian	62%	64%	59%
Black	5%	4%	9%
Asian	1%	1%	2%
Hispanic	3%	4%	14%
Native American	30%	27%	16%
Average Property Valuation per Student (12/2013)		\$27,214	\$43,631
Students Eligible for Free/Reduced Lunch	41%	46%	62%

U.S. Census Data (American Community Survey 2008-2012 5-Year Estimates Unless Otherwise Noted)

District Population		15,162	7,196
Poverty Rate		10%	17%
Unemployment Rate		7%	7%
Average Household Income		\$67,638	\$60,783
Single-Parent Families		27%	33%
Highest Educational Level for Adults Age 25+			
College Degree		22%	23%
H.S. Diploma w/o College Degree		63%	63%
Less than 12th Grade Education		15%	14%

Preparation, Motivation & Parental Support

KG-3rd Graders Receiving Reading Remediation		23%	35%
Average Number of Days Absent per Student	11.8	10.2	9.8
Mobility Rate (Incoming Students)	8%	7%	11%
Suspension to Student Ratio: (Higher ratio is better.)			
There was 1 suspension (of 10 days or less) for every ___ students	24.2	27.8	12.7
There was 1 suspension (of more than 10 days) for every ___ students	None	110.4	124.4
Parents Attending Parent/Teacher Conference	64%	59%	74%
Patrons' Volunteer Hours per Student	1.4	2.4	3.3

Juvenile Offenders & Offenses (Office of Juvenile Affairs)*

One out of every ___ students was charged. (Higher ratio is better.)	157.8	100.9
Of those charged, each averaged ___ offense(s).	1.9	2.0
Of those charged, ___ were alleged gang members.	0	0.4

*These statistics are provided as another indicator of the environment in which schools must operate. In most cases the offenses were not committed at school.

Symbols Used on this Report

DNA - Data Not Available RM - Revised Methodology P - Full-time Equivalent Data Provided by Privacy Law
 NA - Not Applicable ADM - Average Daily Membership/Average Enrollment DR - School/District Failed to Respond with Usable Data

2012-2013 School Educational Process

Classroom & Administration Characteristics

	School	District Total (All Schools)	High School State Average
Fall Enrollment	242	3,313	363
Non-Special Ed. Teachers (FTE):			
Number of Teachers	12.2	176.7	20.8
Average Salary (w/ Fringe)	\$43,770	\$43,729	\$45,073
Teachers with Advanced Degree(s)	15.8%	20.6%	29.8%
Average Years of Experience	12.4	13.0	13.1
Students in Special Education	15.3%	15.0%	15.1%
Special Education Teachers (FTE)	3.0	26.5	2.7
Counselors (FTE)	0.8	9.7	1.2
Other Certified Professional Staff (FTE)	1.4	19.9	1.4
Administrators (FTE)	1.0	14.1	1.8

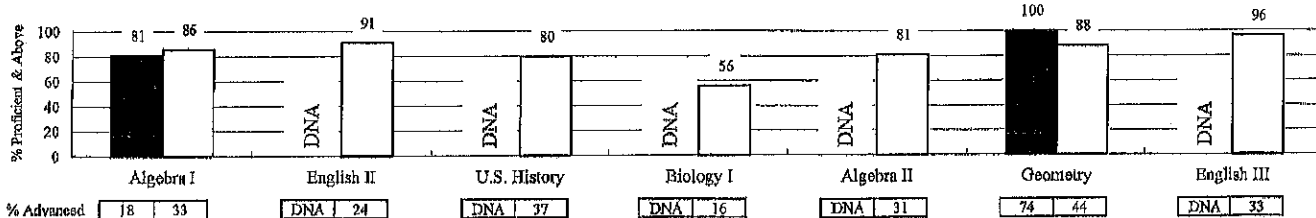
High School Curriculum (Units Offered in Selected Subject Areas)

Language Arts	NA	8.1
Science	NA	6.3
Math	NA	6.6
Social Studies	NA	5.6
Fine Arts	NA	7.1
Languages (non-English)	NA	2.8
Total	NA	36.4

2012-2013 Student Performance

High School End-of-Instruction Tests*

Results for non-high school students may be posted on the K-8 report card.



*Test results were only calculated for *Regular Education-Full Academic Year* students.

■ This School

□ State Average

Additional High School Performance Measures

	This School	District	High School State Average
Senior Graduation Rate (2013 Seniors)	NA	98.7%	97.6%
4-Year Dropout Rate (Class of 2013)	NA	10.4%	9.6%
Average GPA of HS Seniors (2013 Seniors)	NA	3.1	3.0
Career-Tech Occupationally-Specific Program Participation (2013 Seniors)	NA	59.0%	52.8%
Average ACT Score (Class of 2013)	NA	21.1	20.9
HS Graduates Completing Regents' College-Bound Curriculum (2013 Seniors)	NA	78.1%	85.3%
Out-of-State College-Going Rate (2013 Seniors)	NA	6.7%	6.1%
Oklahoma College-Going Rate ('10~'12)	NA	44.7%	47.2%
Oklahoma College Freshmen taking at least one remedial course in Math, English, Science, or Reading ('10~'12)	NA	43.3%	39.2%
Oklahoma College Freshmen with GPA 2.0 or Above ('10~'12)	NA	90.0%	86.0%